



KRONBERG INTERNATIONAL



COMPANY PRESENTATION



www.kronberg-international.com



TABLE OF CONTENTS

Business Profile.....	3
Strategy and Concept.....	4
Data and Facts.....	5
Business Segments.....	6
Organigram	7
Investment und Co-Investment.....	8
Asset Management.....	9
Development.....	10
Sustainability.....	11
Milestones.....	12
Investment partners.....	15
Current projects.....	18
Completed projects.....	30
Contact.....	41



BUSINESS PROFILE

The Kronberg Group is a real estate company operating throughout Europe focusing on investments in Germany, Austria and Italy.

We invest alone or carry out joint investments with international partners such as Prelios S.p.A., conwert and Shore Capital, concentrating on real estate projects with development potential.

Our group specialises in the following three business areas:

- Investment & Co-Investment**
- Asset Management**
- Development**

We have firmly established our market position through clear strategic goals, high professional standards, a flexible and transparent organisational structure as well as continuous improvement of our business processes.



STRATEGY AND CONCEPT

The strategy of the Kronberg Group is based on a sustainable increase in value of the acquired real estate properties, projects and portfolios.

We are able to continuously increase the net asset value as well as the market value of our real estate properties through professional real estate and development management, thus generating attractive returns and profits for both, the Kronberg Group and our partners.

We as the Kronberg Group make a point of thinking and acting in a future-oriented way. For this reason we are committed to helping develop a social sense of responsibility. Sustainability and its principles are among the basic principles of our growth.

Investment in secure and sustainable values is deemed a challenge by the management and the employees, hence it is subject to permanent supervision by investors and the public.

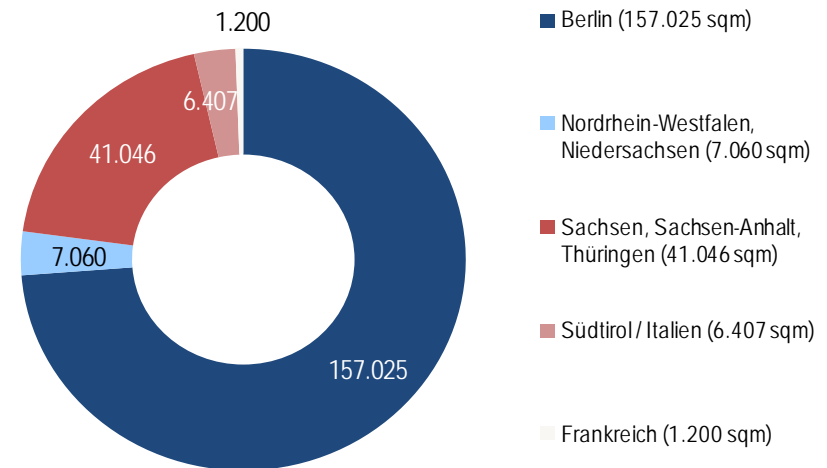
Accordingly, Kronberg operates a **transparent communication** policy and has a strong awareness of our **social responsibility**.

DATA AND FACTS

Real Estate Assets of the Kronberg Group (including projects in which Kronberg participates):

Portfolio	m ²	Einheiten	Residential	Commercial	Stellplätze
Residenz Berolina	70.070	979	908	71	3
Tizian 1	60.429	955	949	6	170
Tizian 2	26.126	319	296	23	81
Tasso Sachsen 1	20.940	287	252	35	89
Tasso Sachsen 2	13.232	177	147	30	55
Tasso Rhein Ruhr	7.060	103	96	7	30
Joachimstal	4.289	15	5	10	—
GVARE	2.585	21	20	1	2
Quartier Kronberg	400	2	—	2	5
Sarl Passy	1.200	30	30	—	30
Villenresort	6.407	11	11	—	6
TOTAL	212.738	2.899	2.714	185	471

Total effective area sqm (Total: 212,738 sqm)



date: 31/12/2011



BUSINESS SEGMENTS



- **Investment und Co-Investment**
We invest alone or with selected international partners in residential and commercial portfolios.



- **Asset Management**
We manage real estate portfolios aiming at optimization and increase in value.

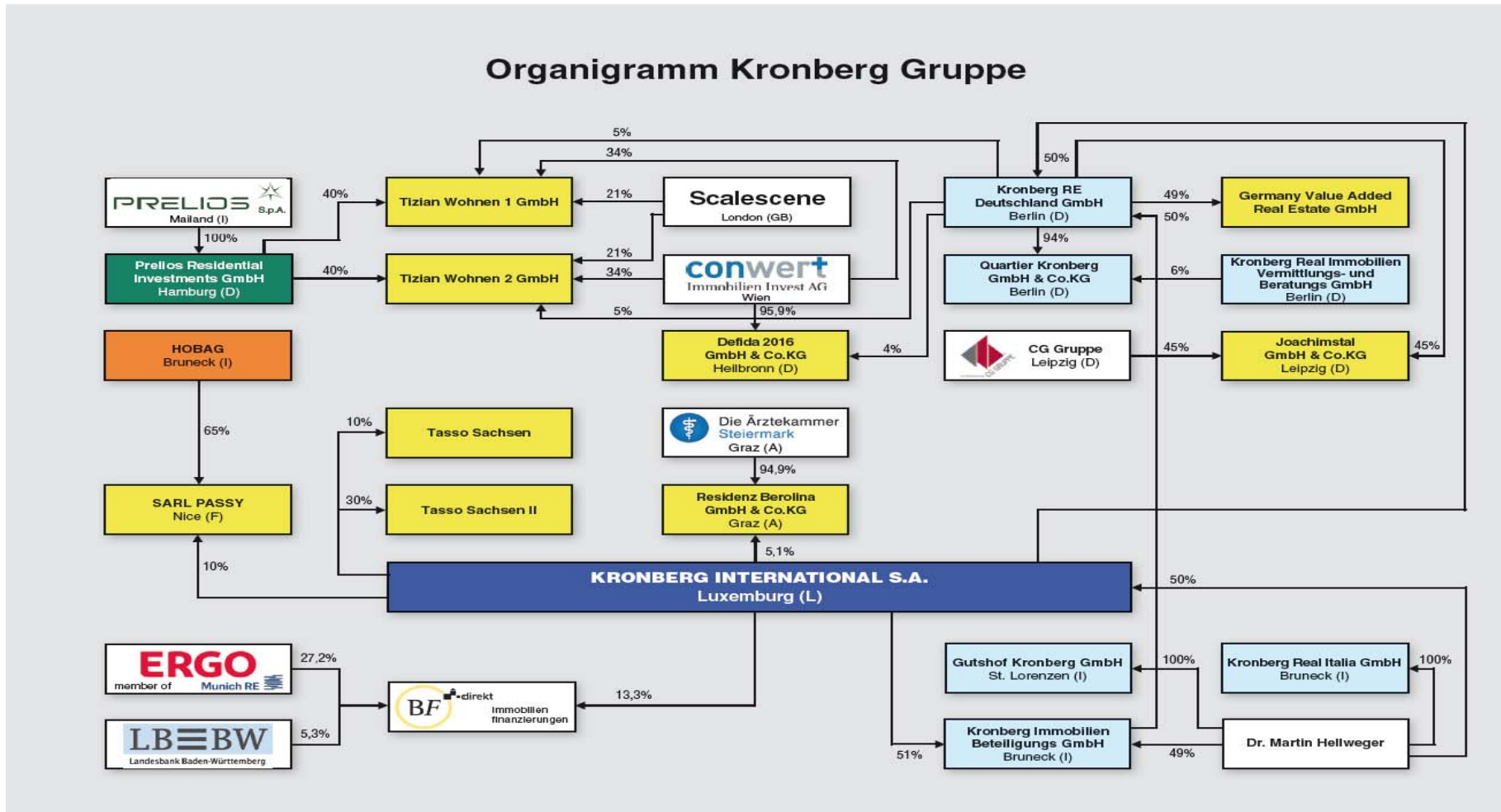


- **Development**
We are involved in the development of new construction projects and the redevelopment of inventory real estate.



- **Sustainability**
We are a medium to long-term investor with a strong sense of social responsibility.

ORGANIGRAM KRONBERG GROUP





INVESTMENT UND CO-INVESTMENT

For two decades, the Kronberg Group has been investing in real estate portfolios and development projects, either alone or with selected investment partners. These investments range from single assets and real estate portfolios to real estate companies active in the residential and commercial market.

Kronberg invests its own capital in all the real estate portfolios it manages, thus creating a relationship based on confidence and a feeling of safety with its investment partner.

Kronberg has specialized in the following areas regarding Investment & Co-Investment strategy:

- Definition of investment segments**
- Development of the investment strategy**
- Assessment and evaluation of investment possibilities**
- Development of efficient, tax optimized company structures**
- Arrangement of financing**
- Supervision and implementation of acquisition processes**
- Asset and Project Management**
- Sales & Marketing**

For each portfolio managed by Kronberg an in-depth analysis is carried out before developing specialized strategies, which are then realized with the collaboration of service partners and specialist real estate companies.

The activities carried out by Kronberg lead to a significant enhancement in value of the real estate portfolios and a profit optimization of the investment.



ASSET MANAGEMENT

Kronberg invests its own capital in all the real estate portfolios it manages thus providing confidence and a sense of security for the investment partners. Kronberg specializes in the following areas of Asset Management:

Yield optimization

Cost optimization

Object optimization

Portfolio optimization

An exact analysis of real estate projects allows for the development and implementation of customized strategy.

Kronberg actively cooperates with specialized companies in the real estate industry with the aim of providing optimal management of the real estate portfolios. As a result, Kronberg is able to grant higher levels of tenant satisfaction, favorable tenant structures, higher rent levels as well as longer rental contract periods.

Kronberg identifies undeveloped profit-potentials and reevaluates them through constructional, technical, organizational and business processes which guarantee solutions on a highest level.



DEVELOPMENT

Kronberg is backed by two decades of experience in development, financing and realization of real estate projects. The Group invests its own capital in all the real estate portfolios it manages thus providing confidence and a sense of security for the investment partners.

Kronberg has specialized in the following areas of real estate development:

- Evaluation of development projects**
- Development of detailed business plans**
- Acquisition of appropriate premises**
- All-inclusive project management**
- Marketing and utilization**

Kronberg identifies profit-potentials and reevaluates them through constructional, technical, organizational and business processes. Kronberg actively cooperates with specialists such as architects, engineers, technicians and companies in the real estate business in order to provide an optimal realization of each project.

Kronberg analyzes and evaluates social, cultural and economical developments in order to meet the market demands of tomorrow.



SUSTAINABILITY

The Kronberg Group is an investor with medium to long-term investment objects.



Our management is firmly convinced that a long-term positive development in the real estate business can only be achieved if economic, environmental and social aspects are aligned in all business areas.

Strict attention and social responsibility is directed towards cooperation with all parties involved in a project (leaseholders, public decision-makers, investment and business partners).



When choosing our investment partners, we pay special attention to integrity and a common understanding of the same standards. Prelios S.p.A. is the only real estate company in Europe which has been ranked by Axia (the company for ethic and financial rating) with an A++ for social responsibility – one of the highest marks on the scale of Axia Financial Research. Our partner conwert Immobilien Invest AG is the first Austrian real estate company that has been ranked in the VÖNIX-VBV sustainability index (VÖNIX index). Conwert was also named the most transparent listed residential property company in Germany, Austria and Switzerland by Feri Transparency Rating.



MILESTONES I

1989

- Formation of the Kronberg Group by Dr. Martin Hellweger.

1990

- Entry into the German real estate market.
- Acquisition of various real estate assets in Berlin.

1995

- Expansion of the business strategy into the business area „Development of shopping centers“.
- Start of the project „Multifunctional Jute Center“, Delmenhorst (Bremen) with a total floor space of ca. 30,000 sqm.

1996

- Entry into the Czech real estate market.
- Acquisition, renovation and lease of the Kronberg building in the center of Prague with a floor space of ca. 4,000 sqm.

1998

- Expansion of the business strategy into the business area „Development Residential“.
- Acquisition of the premises and realization of the project „Quartier Kronberg“ in Berlin with a total floor space of ca. 9,000 sqm in cooperation with the quoted company „Bauverein zu Hamburg“.

2002

- Kronberg acquires shareholdings of the stock-quoted Vienna-based convert Immobilien Invest AG. Martin Hellweger is appointed member to the supervisory board of convert Immobilien Invest Ag.
- Joint Venture with convert Immobilien Invest AG in order to establish various real estate portfolios in the residential field.
- Acquisition of some 500 units with a total floor space of ca. 47,000 sqm.



MILESTONES II

2004

- Sale of Kronberg-shares in Kronberg-conwert Joint Venture to conwert Immobilien Invest AG Vienna.

2005

- Joint Venture with Pirelli RE Milan in order to target the German real estate market.
- Acquisition of 1,600 units of 105,000 sqm in cooperation with Pirelli RE and conwert.

2006

- Acquisition of the real estate portfolio of the Allianz Insurance Austria, composed by 66 Austrian units and approx. 120,000 sqm in cooperation with Pirelli RE, ECO and conwert Immobilien Invest AG.

2007

- The Kronberg company sells its shareholdings of the Kronberg-Pirelli joint enterprise, the former operative platform of Kronberg and Pirelli, to Pirelli RE Deutschland GmbH.
- Joint Venture with Puma Brandenburg in order to handle the project „Quartier Mendelsohn“, Kurfürstendamm – Cicerostr. Berlin
- Joint Venture with HOBAG AG, Italy in order to handle the project „Sarl Passy“ Cote d'Azur France.
- Acquisition of shares in S.I.G. RE B.V., Amsterdam. Core business of the SIG Holding is the establishment of residential real estate portfolios in Germany in cooperation with Pirelli RE, GPI, ROEV, Giardi Group and Cordifin.

2008

- Joint venture with an Italian industrial family to build residential portfolios. The investment target for the year of 600 units and approx. 41,300 m² was successfully reached.



MILESTONES III

2009

- Acquisition of a portfolio of Colonia Real Estate, composed by 1,032 units and ca. 76,000 sqm in cooperation with conwert Immobilien Invest AG. The volume of the transaction amounts to about EUR 67 Mio.

2010

- Kronberg International acquires shares of BF.direkt AG, the shareholdings amounting to 13.3%. Among the other shareholders there are the Munich-based insurance group ERGO, holding 27.2%, and LBBW, holding 5.3%.

Martin Hellweger is appointed member of the supervisory board of BF.direkt AG.

2011

- Successful sale of Resident Berolinum Liegenschafts GmbH to a French institutional investor. It is the real estate portfolio acquired in 2009 with 1,032 units and 76,000 sqm.
- Joint venture with Ärztekammer für Steiermark. A portfolio of properties in Berlin with 979 units and approx. 76,000 sqm was acquired.
- Sale of Kronberg-shares in SIG RE BV Netherlands, owner of the three portfolios of Resident Baltic, Resident Sachsen and Resident West.



INVESTMENT PARTNER I



Die Ärztekammer
Steiermark

The Ärztekammer für Steiermark (Medical association of Styria) is a public corporation and its welfare fund administers the pension funds of their 6300 medical and dental members with a total volume of about EUR 450 million, thus being the second-largest in the Austrian medical associations.

The development after the financial crisis, the default of Greece, Portugal and Ireland and the corresponding rating downgrade for government securities, the situation in real estate prices in Austria, which do not allow for a reasonable return, along with a not unfounded fear of inflation have prompted the Medical Association to strengthen its real estate portfolio, which previously consisted of objects in Graz and Vienna, with an initial focus on Berlin.

For more information, visit: www.aekstmk.or.at.

conwert
Immobilien Invest AG

The conwert Immobilien Invest AG is a central European residential real estate company and Vienna's leading old building-development-company. The company invests in valuable inner-city residential assets with development potential. Conwert is listed on the Vienna Prime Stock Market.



INVESTMENT PARTNER II



Prelios S.p.A. (Pirelli & C. Real Estate S.p.A. until October 2010) has been listed on the Milan stock exchange since May 2002. The company is active in the Asset & Fund Management sectors of the real estate industry in Europe. Prelios assumes third party responsibility for real estate portfolios with the aim of increasing their long-term value. This is achieved by providing a comprehensive range of services covering Agency, Property and Facility Management, together with a strategic program for managing investment funds and assets.



The tradition-steeped South Tyrol construction company HOBAG is known as an efficient player in the construction industry. In addition to construction, they plan and design for the sale of residential or commercial real estate.



With premium income amounting to € 19 billion, ERGO is one of the major insurance groups in Europe. Worldwide, ERGO is represented in more than 30 countries, concentrating on Europe and Asia. In Europe, ERGO is no. 1 in the health and legal expenses insurance segments, and on its home market Germany it is among the market leaders.



INVESTMENT PARTNER III



As a full service and commercial bank the Landesbank Baden-Württemberg (LBBW) is among the major German credit institutions.

Along with its regional commercial banks Baden-Württembergische Bank (BW-Bank), Rheinland-Pfalz Bank (Rheinland-Pfalz Bank) and Sachsen Bank (Sachsen Bank) it offers the full range of services typical of a modern major bank in more than 200 branch banks and support points throughout Germany.



The CG group has been active in the real estate industry throughout Germany for more than 20 years. In Leipzig alone the CG group has developed more than 100 residential buildings and commercial properties with a total floor space of more than 200,000 sqm. In addition, there are also global projects in Leipzig like the “Blüthner Carré”, the „Südcenter” and the “Plagwitzer real estate area”.

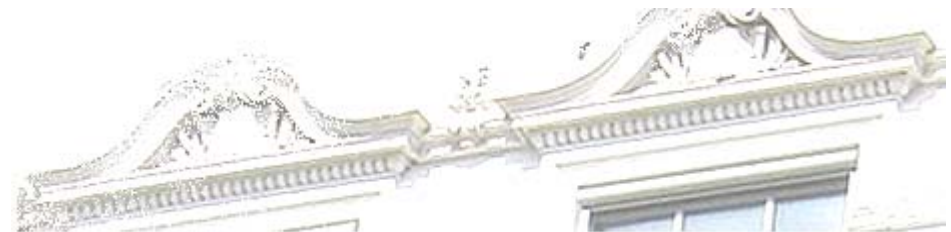
Furthermore, among their properties are objects like the “Spreehöfe” or the “Lichtenberger Lofts” in Berlin.

For more information visit: www.cg-gruppe.de



CURRENT PROJECTS

In the following you will be shown Current Real Estate Assets of the Kronberg Group's own companies and projects or of those in which Kronberg is participating.





Residenz Berolina GmbH & Co. KG (A)

Residential portfolio in Berlin

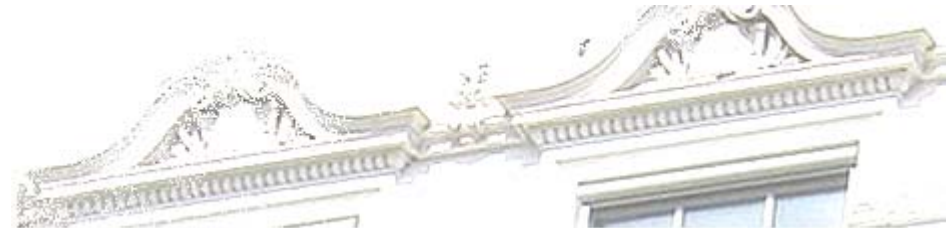
Residenz Berolina holds a total of 32 properties in Berlin with a total investment of € 84 million.

Data and Facts:

Investment location:	Berlin-Mitte, Prenzlauer Berg and Friedrichshain
Total floor space:	70,070 sqm
Units:	Residential 908 Commercial 71
As of:	31/12/2011

Investment strategy:

- Object and portfolio optimization
- Maintaining the status over the long term



Joachimstal GmbH & Co. KG (D)

Residential and commercial property in Leipzig

Joachimstal is a listed residential and commercial building in a prime downtown location in the pedestrian zone in Leipzig .

Data and Facts:

Investment location:	Leipzig
Total floor space:	4,289.2 m ²
Units:	Residential 5 Commercial 10
Investment Partner:	CG Gruppe
As of:	31/12/2011

Investment strategy:

- Object and portfolio optimization
- class listed monument
- handover to the new owner completely leased
- Long lease term
- Sale as share or asset deal





Tizian Wohnen 1 GmbH (D)

Residential portfolio in Berlin

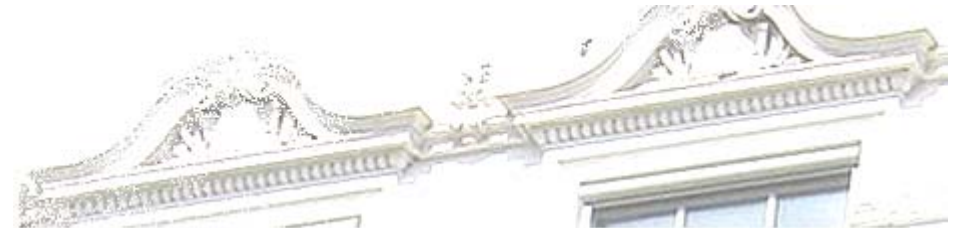
Tizian Wohnen 1 holds a residential portfolio in the city of Berlin with a total investment of approx. € 50 million.

Data and Facts:

Investment location:	Spandau, Kreuzberg und Wedding
Total floor space:	approx. 60,429 sqm
Units:	Residential 949 Commercial 6
Investment Partners:	Prelios S.p.A., conwert Immobilien Investment AG
As of:	31/12/2011

Investment Strategy:

- Object and portfolio optimization
- Maintaining the status over the medium term





Tizian Wohnen 2 GmbH (D)

Residential and commercial portfolio in Berlin

The Tizian Wohnen 2 holds a commercial and residential portfolio in the city of Berlin with a total investment of approx. € 25 million.

Data and Facts:

Investment location:	Spandau, Rudow
Total floor space:	approx. 26,126 sqm
Units:	Residential 296 Commercial 23
Investment Partner:	Prelios S.p.A., conwert Immobilien Investment AG
As of:	31/12/2011

Investment Strategy:

- Object and portfolio optimization
- Maintaining the status over the medium term



TASSO Sachsen 1 GmbH (D)

Residential and commercial portfolio in Leipzig, Dresden, Chemnitz and Zwickau

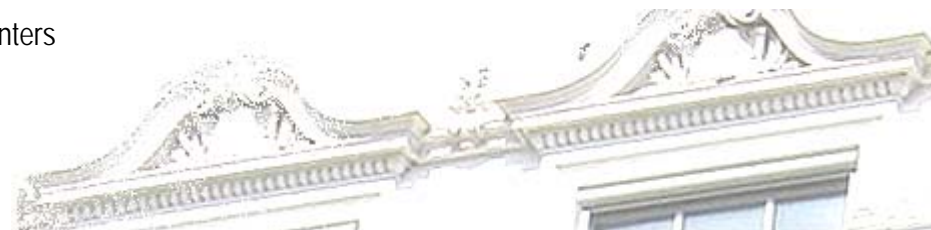
TASSO Sachsen is a residential portfolio with a small commercial portion in the regions of Leipzig, Dresden, Chemnitz and Zwickau.

Data and Facts:

Investment location:	Leipzig, Dresden, Chemnitz, Zwickau
Total floor space:	approx. 20,940 sqm
Residential and Commercial Units:	Residential 252 Commercial 35
Investment Partner:	Confidential
As of:	31/12/2011

Investment Strategy:

- Acquisition of single units and smaller real estate portfolios
- Investment location: good residential areas in large cities and city centers
- Object and portfolio optimization
- Maintaining the status over the medium or long term



TASSO Sachsen 2 GmbH (D)

Residential and commercial portfolio in Chemnitz, Dresden and Leipzig

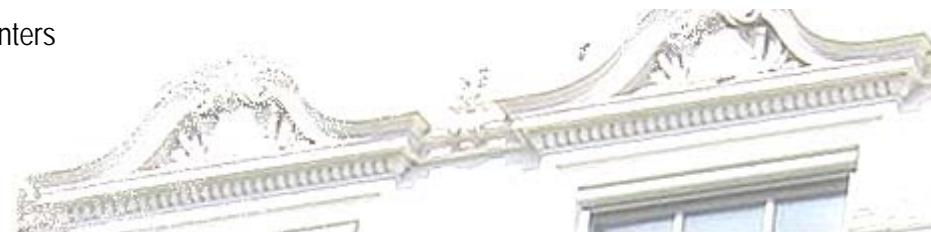
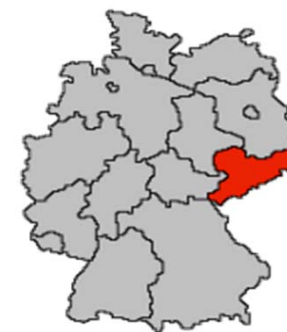
TASSO Sachsen 2 is creating a residential portfolio with little commercial parts in the regions of Chemnitz, Dresden and Leipzig with a total investment of approx. € 10 million.

Data and Facts:

Investment location:	Chemnitz, Dresden, Leipzig
Total floor space:	approx. 13.232 sqm
Residential an Commercial Units:	Residential 147 Commercial 30
Investment Partner:	Confidential
As of:	31/12/2011

Investment Strategy:

- Acquisition of single units and smaller real estate portfolios
- Investment location: good residential areas in large cities and city centers
- Object and portfolio optimization
- Maintaining the status over the medium or long term





TASSO Rhein Ruhr GmbH (D)

Residential and commercial portfolio in Oberhausen, Gelsenkirchen and Recklinghausen

TASSO Rhein Ruhr is creating a residential portfolio with little commercial parts in the regions of Oberhausen, Gelsenkirchen and Recklinghausen with a total investment of approx. € 6 million.

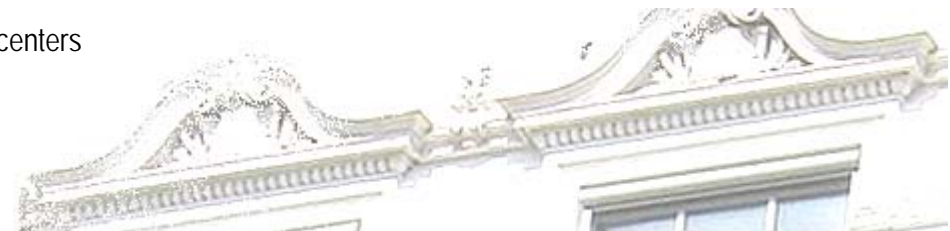


Data and Facts:

Investment location:	Oberhausen, Gelsenkirchen, Recklinghausen
Total floor space:	approx. 7,060 sqm
Residential and Commercial Units:	Residential 96 Commercial 7
Investment Partner:	Confidential
As of:	31/12/2011

Investment Strategy:

- Acquisition of single units and smaller real estate portfolios
- Investment location: good residential areas in large cities and city centers
- Object and portfolio optimization
- Maintaining the status over the medium or long term





Germany Value Added Real Estate GmbH (D)

Residential and commercial property portfolio in Saxony, Berlin and Potsdam

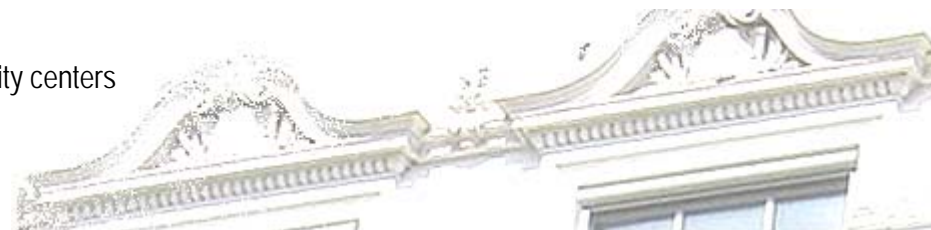
The Germany Value Added Real Estate GmbH Company is establishing a residential and commercial property portfolio in the German regions of Saxony, Saxony-Anhalt and Thuringia. In doing so, they aim at realizing a total investment volume of some € 5 million.



Data and Facts:	
Investment location:	Dresden, Leipzig, Chemnitz, Zwickau, Berlin, Potsdam, Bautzen
Total floor space:	approx. 2,585 sqm
Units:	Residential 21, Commercial 1
Investment Partner:	Kronberg RE Deutschland GmbH, Winterberg Real Estate GmbH, BF.direkt AG, Internationales Bankhaus Bodensee AG
As of:	31/12/2011

Investment strategy:

- Investment location: good and residential areas in large cities and city centers
- Object and portfolio optimization
- Maintaining the status over the medium or long term
- privatization of single assets
- Value Added Strategy





Quartier Kronberg GmbH & Co. KG (D)

Office property in the Centre of Berlin

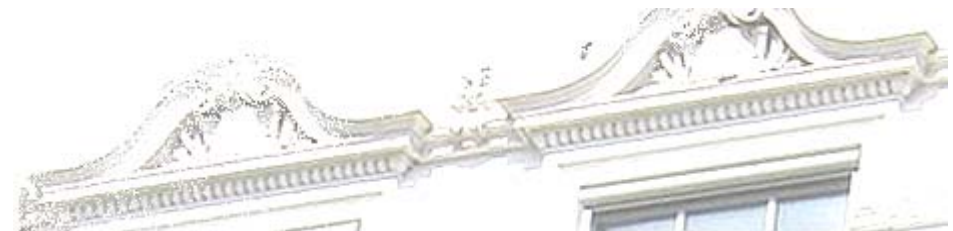
Quartier Kronberg is an office property in the centre of Berlin.

Data and Facts:

Investment location:	Berlin-Mitte
Total floor space:	approx. 400 sqm
Residential Units:	Commercial Unit and 5 parking spaces (garage)
Investment Partner:	none
As of:	31/12/2011

Investment Strategy:

- Investment location: top location in the centre of Berlin
- Maintaining the status over the long term



Kronberg Real Italia GmbH (I)

Mansion project in Bruneck

Kronberg Real Italia has built a new mansion estate in Bruneck, Italy with a total investment of approx. € 6 million.



Data and Facts:

Investment location:	St. Lorenzen/Bruneck (BZ)
Total floor space:	approx. 6,407 sqm
Units:	11
Investment Partner:	none
As of:	31/12/2011

Investment Strategy:

- New mansion subdivision project
- Investment location: top location in the suburbs of Bruneck with excellent transport connection
- sale of individual mansions and apartments





Sarl Passy, Nizza (F)

Transformation of a hotel into freehold apartments at the Côte d'Azur

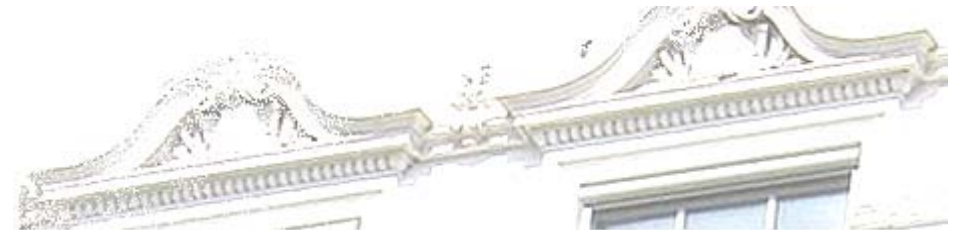
Sarl Passy – transforming a hotel into freehold apartments on the Côte d'Azur.

Data and Facts:

Investment location:	Nizza
Total floor space:	approx. 1,200 sqm
Units:	30 residential units and 30 parking places
Investment Partner:	Hobag
As of:	31/12/2011

Investment Strategy:

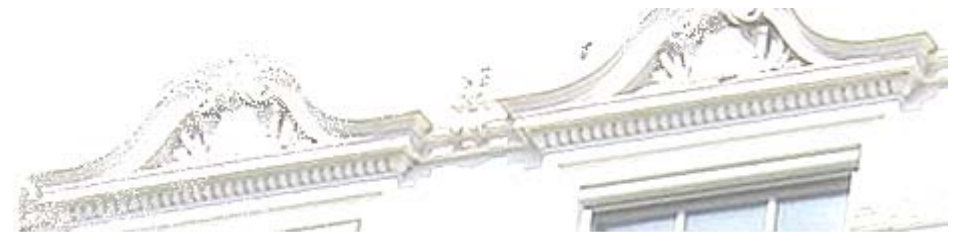
- Transformation in freehold apartments
- Restoration or construction of inventory real estate
- sale of the individual apartments





COMPLETED PROJECTS

Completed real estate assets of the Kronberg Group including projects in which Kronberg is participating.





Johannisstraße 3 GBR (D)

New construction project in the centre of Berlin

The Johannisstraße 3 is a new construction project in the centre of Berlin:

Data and Facts:	
Investment location:	Berlin Mitte
Total floor space:	approx. 2,700 sqm
Units:	16 residential apartments
Investment Partner:	Minerva Immobilien
Condition:	Sold, 9/1/08

Investment Strategy:

- Investment location: top location in the centre of Berlin
- Planning, construction, commercialization

The project was sold with building license to the Euroboden GmbH company (Munich) in September 2008.



Mendelsohn Quartier GmbH (D)

Subdivided property in the centre of Berlin

The Mendelsohn Quartier is a subdivided property in Berlin – Kurfürstendamm with two residential and commercial houses located in Köpenick and Charlottenburg.

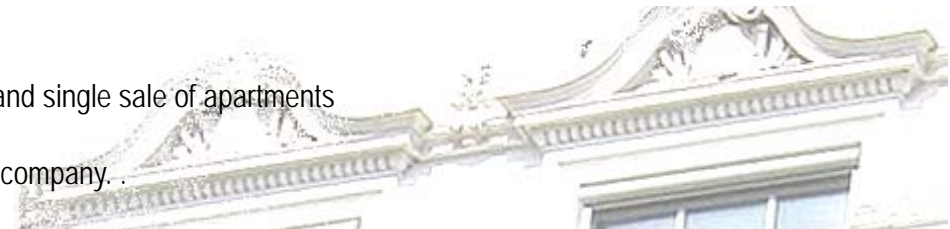
Data and Facts:

Investment location:	Kurfürstendamm, Cicerostraße, Bahnhofstraße and Wilmerdorfer Straße
Total floor space:	approx. 10,812 sqm
Units:	Residential 163 Commercial 8
Investment Partner:	Puma Brandenburg
Condition:	Sold, 1/6/10

Investment Strategy:

- Restoration real estate
- Investment location: top location in central Berlin
- Object optimization
- Entire sale of objects located in Bahnhofsstrasse, Wilmerdorfstrasse and single sale of apartments

Kronberg sells its shares amounting to 5.1 % to the Mendelson Quartier company.



Jute Delmenhorst, Bremen

Located downtown in the city of Delmenhorst (Bremen), a multi-functional centre with 18,000 sqm of retail area, 4,000 sqm of service facilities and 8,000 sqm of entertainment facilities has been realized. Before selling to the Nova Project GmbH in 2006, Kronberg held 50+1 shares of the ownership society.



Data and Facts:

Investment location:	Delmenhorst, Niedersachsen
Investment volume:	€ 56 million
Total floor space:	approx. 30,000 sqm
Commercial Units:	approx. 35
Investment Partner:	Munte Projektentwicklung
Condition:	completed

Investment Strategy:

- Construction of a multi-functional commercial centre for the city of Delmenhorst
- Renting
- Entire sale of object

Until selling it in 2006 Kronberg held 50 % + 1 share in the owner company Projecta Nova GmbH. Kronberg continues to hold 6% of Jute Immobilien und Projektentwicklung GmbH & Co. KG.



Allianz Deal, Austria

Acquisition of the Allianz Group real estate portfolio Austria with an investment volume of some € 225 million.

Data and Facts:

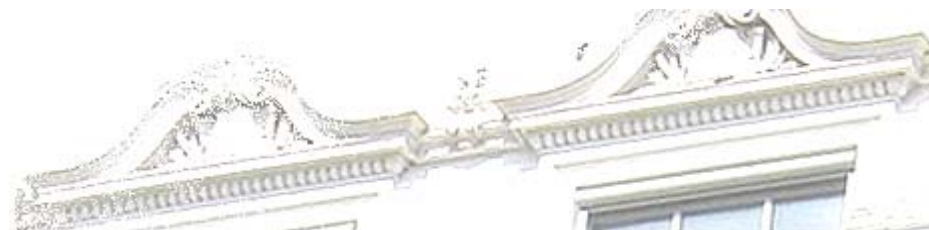
Investment location:	Vienna and mainly state capitals of Austria
Investment volume:	€ 250 million
Total floor space:	approx. 120,000 sqm
Units:	offices, apartments and stores
Investment Partner:	Prelios S.p.A., convert Immobilien und ECO Business
Condition:	completed



Investment Strategy:

- Entry into Austrian market due to this transaction
- Subdivision in sub portfolios
- Part-sale of the sub portfolios
- Maintaining the left portfolio over the medium or long term

The project was sold to convert Immobilien Invest AG and ECO Business Immobilien AG in 2006.





Kronberg Building, Prague (CZ)

The Kronberg Building is located in the centre of Prague close to the National Bank of the Czech Republic. It is composed of 2,300 sqm of office space, 450 sqm of commercial and 380 sqm of residential space. The sales revenue is € 7,5 million.



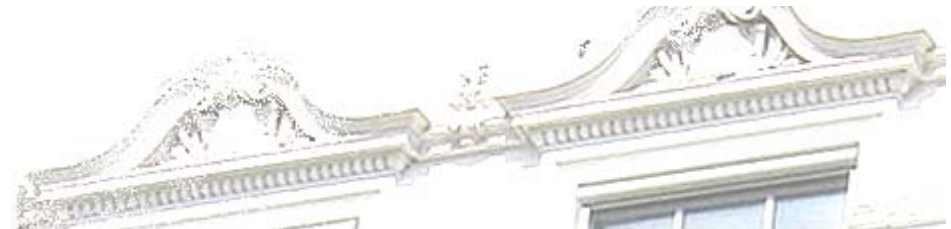
Data and Facts:

Investment location:	Náměstí Senovážné
Investment volume:	€ 7,5 million
Total floor space:	3,500 sqm
Units:	25 and 12 parking places
Investment Partner:	none
Condition:	Completed (sale September 2007)

Investment Strategy:

- Restoration inventory real estate
- Investment location: top downtown location
- Renting and sale of the object

The project was sold to Polo Suisse s.r.o in September 2007.





Conwert C&K, Berlin

The Conwert C&K was establishing a residential portfolio in the centre of Berlin, concluding with an investment volume of approx. € 40 million.

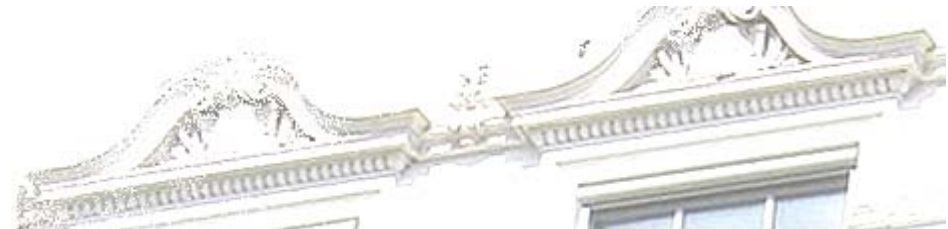
Data and Facts:

Investment location:	Charlottenburg, Wilmersdorf, Schöneberg, Friedenau, Steglitz
Investment volume:	€ 40 million
Total floor space:	40,000 sqm
Units:	429
Investment Partner:	Conwert
Condition:	Completed by sale to shareholdings of conwert



Investment Strategy:

- Creating a residential portfolio in Berlin
- Construction and renting of the apartments
- Development modernization
- Object and portfolio optimization
- Maintaining the status over the medium or long term



Berolinum Liegenschaftsbesitz AG (D)

Residential & Commercial Portfolio in Berlin

The Berolinum Liegenschaftsbesitz AG is a portfolio in Berlin with a total investment volume of about € 67 million.

Data and Facts:

Investment location:	Charlottenburg, Wilmerdorf, Schöneberg, Friedenau, Steglitz
Total floor space:	77,637 sqm
Units:	Residential 942 Commercial 78
Investment Partner:	Conwert Immobilien Investment AG
Condition:	Completed by sale



Investment strategy:

- Redevelopment of the existing properties
- Top location in the centre of Berlin
- Object and portfolio optimization





Resident Baltic GmbH (D)

Residential and commercial portfolio

Resident Baltic is a residential portfolio with a small commercial portion in the regions of Hamburg, Schleswig-Holstein and Mecklenburg – Western Pomerania.

Data and Facts:

Investment location:	Bad Bramstedt, Rostock, Lübeck, Kiel
Total floor space:	approx. 30,956 sqm
Units:	Residential 591, Commercial 19
Investment Partner:	Prelios S.p.A., Gruppo Partecipazioni Industriali S.p.A., ROEV Italia S.p.A., Giardi Group, Cordifin
Condition:	Sold, December 2011



Investment Strategy:

- Acquisition of single units and smaller real estate portfolios
- Investment location: good residential areas in large cities and medium-size cities
- Object and portfolio optimization
- Maintaining the status over the medium or long term





Resident Sachsen P&K GmbH (D)

Residential and commercial portfolio

Resident Sachsen is a residential and commercial portfolio in Saxonia, Saxony-Anhalt and Thuringia with a total investment of approx. € 35 million.

Data and Facts:

Investment location:	Dresden, Leipzig, Chemnitz, Zwickau, Freiberg
Total floor space:	approx. 40,074 sqm
Units:	Residential 570, Commercial 57
Investment Partner:	Prelios S.p.A., Gruppo Partecipazioni Industriali S.p.A., ROEV Italia S.p.A., Giardi Group, Cordifin
Condition:	Sold, December 2011



Investment Strategy:

- Acquisition of single units and smaller real estate portfolios
- Investment location: good residential areas in large cities and city centers
- Object and portfolio optimization
- Maintaining the status over the medium or long term





Resident West GmbH (D)

Residential and commercial portfolio

Resident West is a residential and commercial portfolio in North Rhine-Westphalia and Lower Saxony with a total investment of approx. € 50 million.

Data and Facts:

Investment location:	Düsseldorf, Köln, Duisburg, Bochum, Wuppertal, Hagen, Rheine, Neuss, Meinerzhagen
Total floor space:	approx. 54,780 sqm
Units:	Residential 628 Commercial 73
Investment Partner:	Prelios S.p.A., Gruppo Partecipazioni Industriali S.p.A., ROEV Italia S.p.A., Giardi Group, Cordifin
Condition:	Sold, December 2011



Investment Strategy:

- Acquisition of single units and smaller real estate portfolios
- Investment location: good residential areas in large cities and city centers
- Object and portfolio optimization
- Maintaining the status over the medium or long term





Contact

Kronberg Real Italia GmbH
Herzog-Sigmund-Str. 3
I-39031 Bruneck

Tel: +39-0474-55 50 00

Fax: +39-0474-55 54 11

E-Mail: info@kronberg-international.com

Website: www.kronberg-international.com

Kronberg RE Deutschland
GmbH
Ziegelstr. 24
D-10117 Berlin

Tel: +49 (0)30 20 61 63 5-0

Fax: +49 (0)30 20 61 63 5-10





Disclaimer:

The Kronberg Group makes every effort to provide accurate information. Nevertheless, mistakes and confusions may occur. The Kronberg Group does not assume liability for relevance, accuracy and completeness of the information provided.

The Kronberg Group reserves the right to change, supplement, or delete some or all of the information on this Presentation without notice. Similarly, the Group also reserves the right to temporarily or permanently discontinue the Internet web site or Presentation.

